

GA-S-C Standard Rivet

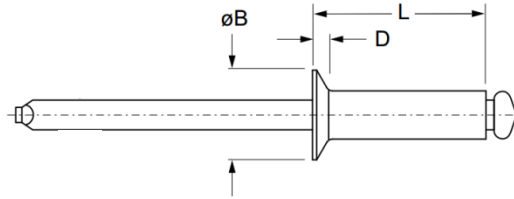
Countersunk head · Steel body · Steel stem
2.4 mm (3/32") - 6.4 mm (1/4")

Features

- Non-structural blind breakstem rivet designed for a wide range of applications
- Cost effective standard rivet
- Installs quickly and easily

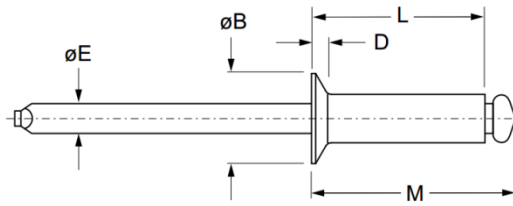
Material

- Body: Steel, zinc plated
- Stem: Steel, zinc plated



IFI Convention

Part No.	Size ø	Grip Range		Hole Size		L max.	øB -	D -	Shear (typical) kN	Tension (typical) kN						
		nom.	min.	max.	min.						max.					
GA-S-32C	2.4 (3/32")	0.5	3.2	2.46	2.54	6.4	4.52 ~ 5.03	0.81	0.58	0.76						
GA-S-34C		3.2	6.4			9.5										
GA-S-36C		6.4	9.6			12.7										
GA-S-41C	3.2 (1/8")	0.5	1.6	3.28	3.38	5.4	6.05 ~ 6.65	1.02	1.16	1.38						
GA-S-42C		1.6	3.2			7.0										
GA-S-43C		3.2	4.8			8.6										
GA-S-44C		4.8	6.4			10.2										
GA-S-45C		6.4	8.0			11.7										
GA-S-46C		8.0	9.6			13.3										
GA-S-48C		9.6	12.7			16.5										
GA-S-410C		12.7	15.9			19.7										
GA-S-52C		0.5	3.2			4.06					4.17	7.6	7.52 ~ 8.33	1.27	1.65	2.09
GA-S-53C		3.2	4.8									9.2				
GA-S-54C	4.8	6.4	10.8													
GA-S-55C	6.4	8.0	12.4													
GA-S-56C	8.0	9.6	14.0													
GA-S-58C	9.6	12.7	17.1													
GA-S-510C	12.7	15.9	20.3													
GA-S-512C	15.9	19.1	23.5													
GA-S-62C	0.5	3.2	4.88	4.98	8.3		9.04 ~ 10.03	1.52	2.40	3.02						
GA-S-63C	3.2	4.8			9.8											
GA-S-64C	4.8	6.4			11.4											
GA-S-65C	6.4	8.0			13.0											
GA-S-66C	8.0	9.6			14.6											
GA-S-68C	9.6	12.7			17.8											
GA-S-610C	12.7	15.9			21.0											
GA-S-612C	15.9	19.1			24.1											
GA-S-614C	19.1	22.2			27.3											
GA-S-616C	22.3	25.4			30.5											
GA-S-82C	0.5	3.2	6.53	6.63	9.5	12.07 ~ 13.34	2.03	4.45	5.52							
GA-S-84C	3.2	6.4			12.7											
GA-S-86C	6.4	9.6			15.9											
GA-S-88C	9.6	12.7			19.1											
GA-S-810C	12.7	15.9			22.2											
GA-S-812C	15.9	19.1			25.4											
GA-S-814C	19.1	22.2			28.6											
GA-S-816C	22.3	25.4			31.8											



DIN Convention

Part No.	Size ø	Grip Range		Hole Size		L max.	øB -	D -	Shear (typical) kN	Tension (typical) kN
		min.	max.	min.	max.					
GA-S-3206C	3.2 (1/8")	1.0	3.0	3.3	3.4	6	5.8 ~ 6.5	1.2	1.15	1.38
GA-S-3208C		3.0	5.0			8				
GA-S-3210C		5.0	6.5			10				
GA-S-3212C		6.5	8.5			12				
GA-S-3214C		8.5	10.5			14				
GA-S-3216C		10.5	12.5			16				
GA-S-4006C	4.0 (5/32")	1.0	2.0	4.1	4.2	6	7.0 ~ 8.0	1.5	1.65	2.09
GA-S-4008C		2.0	4.0			8				
GA-S-4010C		4.0	6.0			10				
GA-S-4012C		6.0	8.0			12				
GA-S-4014C		8.0	10.0			14				
GA-S-4016C		10.0	12.0			16				
GA-S-4018C	12.0	14.0	18							
GA-S-4020C	14.0	16.0	20							
GA-S-4806C	4.8 (3/16")	1.0	1.5	4.9	5.0	6	8.5 ~ 9.5	1.6	2.40	3.02
GA-S-4808C		1.5	3.0			8				
GA-S-4810C		3.0	5.0			10				
GA-S-4812C		5.0	7.0			12				
GA-S-4814C		7.0	9.0			14				
GA-S-4816C		9.0	11.0			16				
GA-S-4818C		11.0	13.0			18				
GA-S-4820C		13.0	15.0			20				
GA-S-4822C		15.0	17.0			22				
GA-S-4825C		17.0	20.0			25				
GA-S-4828C	20.0	23.0	28							
GA-S-4830C	23.0	25.0	30							
GA-S-6412C	6.4 (1/4")	3.5	6.0	6.5	6.6	12	11.5 ~ 13.0	2.2	4.45	5.50
GA-S-6415C		6.0	9.0			15				
GA-S-6418C		9.0	11.5			18				
GA-S-6422C		11.5	15.5			22				
GA-S-6425C		15.5	18.5			25				
GA-S-6430C		18.5	23.5			30				



Can't find what you are looking for?

We can provide customized finishing and colouring.
Contact your nearest [Gripwell](https://www.gripwell.com) team for assistance!